



Pioneering Measured Solutions

*Short Selection Guide*

# Button and Donut Load Cells

[group-4.com](http://group-4.com)

# GROUP FOUR BUTTON AND DONUT LOAD CELLS

In today's world, many applications require a sensor to fit in small spaces whether it on land or sea.

Group Four recognizes the importance of miniature technologies and has a vast experience with design and application of miniature and subminiature designs. Capacities range from 1000 grams to 50,000 lbs. and a form factor of heights ranging from 0.13 inches to 1.50 inches.

Group Four recognizes you should not have to sacrifice accuracy for a subminiature or miniature package which is why many of our designs are 1% accuracy or better. Our team of engineers are ready and available for your specific requirements. Do not compromise call us.



## Capacity Range:

Load cell capacities ranging from 1000 grams to 50,000lb are available.



## Material Construction:

Stainless steel



## Environmental Protection:

IP66, IP67



## Options:

- Different mounting and loading sizes
- Digital Version.



## Customized solutions:

When it is not possible to match standard load cell for any application, Group four can specially check the requirement and provide economical customized load cell solutions.

## APPLICATIONS

Bite Force Testing



Medical Devices



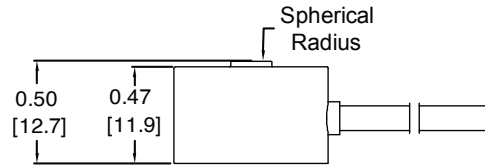
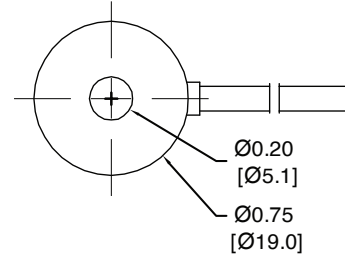
Surgical Robots



Insertion, Press Clamp, Tactile Force Measurement

Space Technology

# GBL 5035



## Capacity Range

 45-112lb  
[20-51kg]

## Environmental Protection

 IP67

## Material Construction

 Stainless Steel

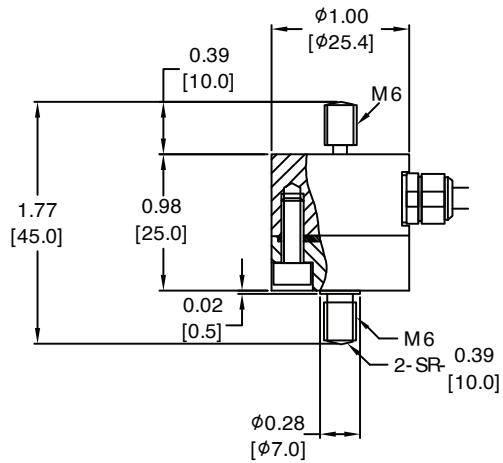
## Output

 1.0mV/V


## Combined Error

 NL 0.5%FS  
HYS 0.5%FS

# 247BS



## Capacity Range

 44-220lb  
[20-100kg]

## Environmental Protection

 IP66

## Material Construction

 Stainless Steel

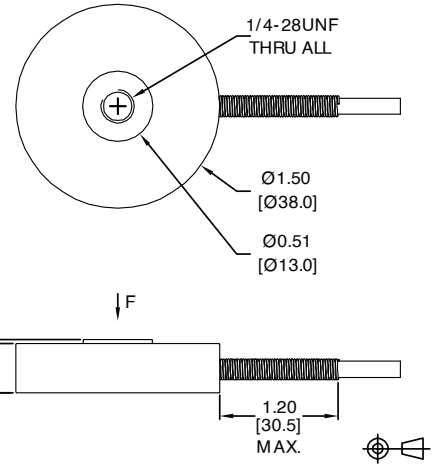
## Output

 1.0mV/V

## Combined Error

 NL 0.3%FS  
HYS 0.1%FS

# GBLZ 5034



### Capacity Range

 **750-1000lb**  
**[340-454kg]**

### Environmental Protection

 **IP67**

### Material Construction

 **Stainless Steel**

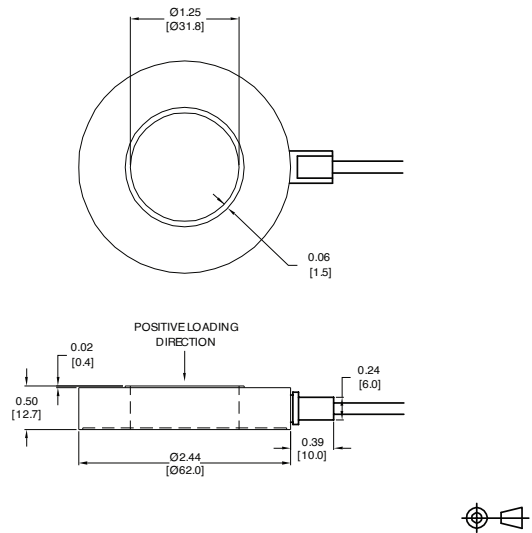
### Output

 **2mV/V**


### Combined Error

 **NL 2%FS**  
**HYS 2%FS**

# ENBL 5045



### Capacity Range

 **1000-10000lb**  
**[454-4535kg]**

### Environmental Protection

 **IP67**

### Material Construction

 **Stainless Steel**

### Output

 **2mV/V**

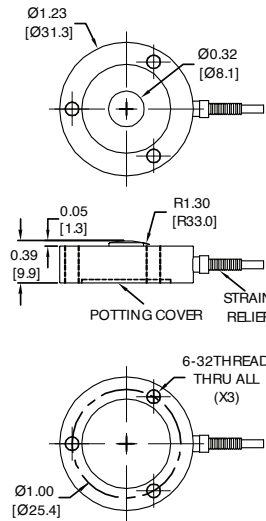
### Combined Error

 **NL 1%FS**  
**HYS 1%FS**

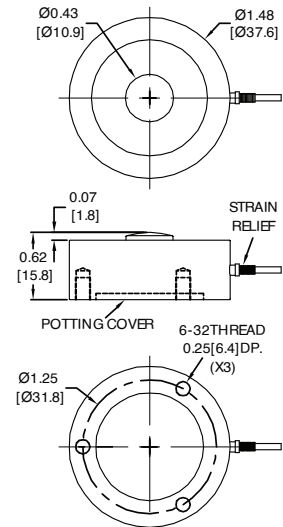
# MBL 5036



100-2000lb:



5000-10000lb:



## Capacity Range



100lb-10000lb  
[45-4535kg]

## Environmental Protection



## Material Construction



Stainless Steel

## Output



2.0mV/V

## Combined Error

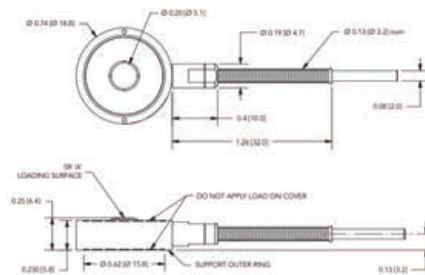


NL 0.5%FS  
HYS 0.5%FS

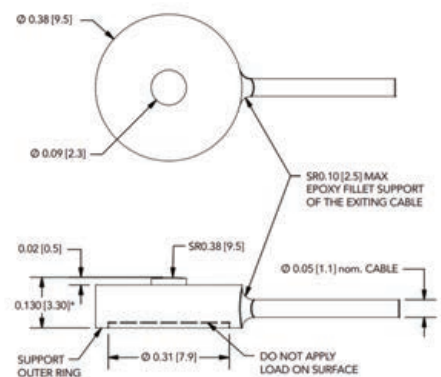
# LPM 510



500 to 1000 Lbs



5 to 50 Lbs



## Capacity Range



5lb-1000lb  
[2.2-453kg]

## Environmental Protection



## Material Construction



Stainless Steel

## Output



0.2mV/V

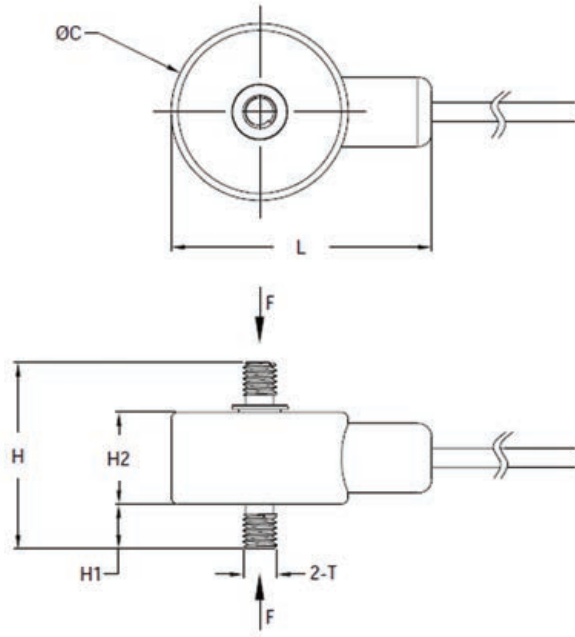
## Combined Error



NL 0.5%FS  
HYS 0.5%FS



# LPM 512



## Capacity Range

 5lb-100lb  
[2.2-45kg]

## Environmental Protection

 IP65

## Material Construction

 Stainless Steel

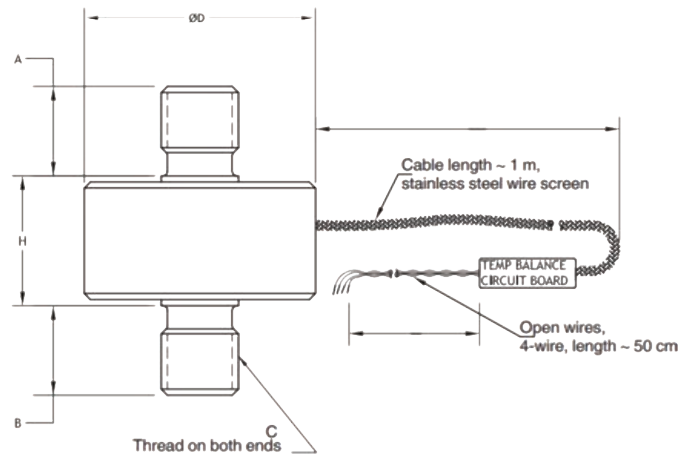
## Output

 2mV/V


## Combined Error

 NL 0.5%FS  
HYS 0.5%FS

# LPM 530DS



## Capacity Range

 10lb-10000lb  
[4.5-4535kg]

## Environmental Protection

 IP66

## Material Construction

 Stainless Steel

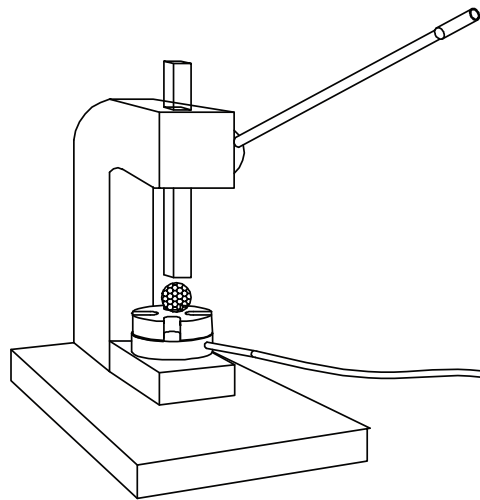
## Output

 2mV/V

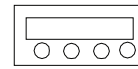
## Combined Error

 NL 0.2%FS  
HYS 0.2%FS

# Measurement Chain

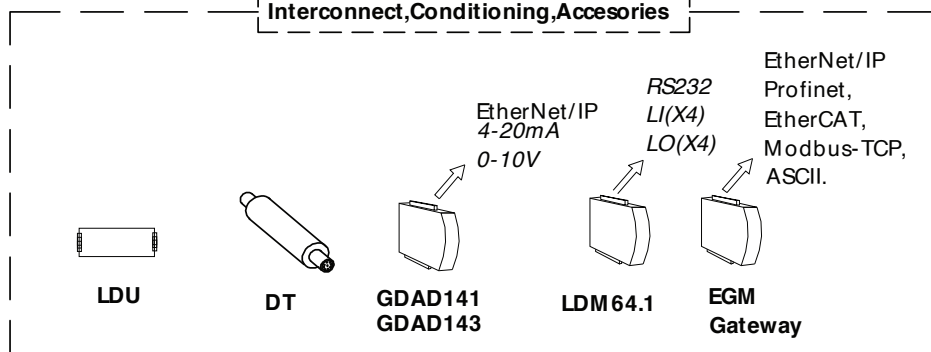


Press Force Measurement

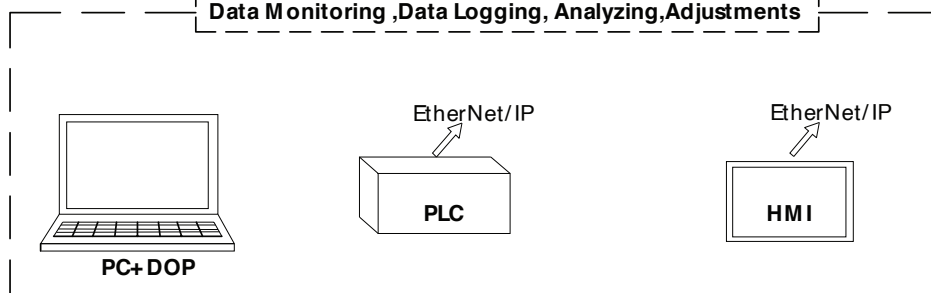


GR300  
GR400

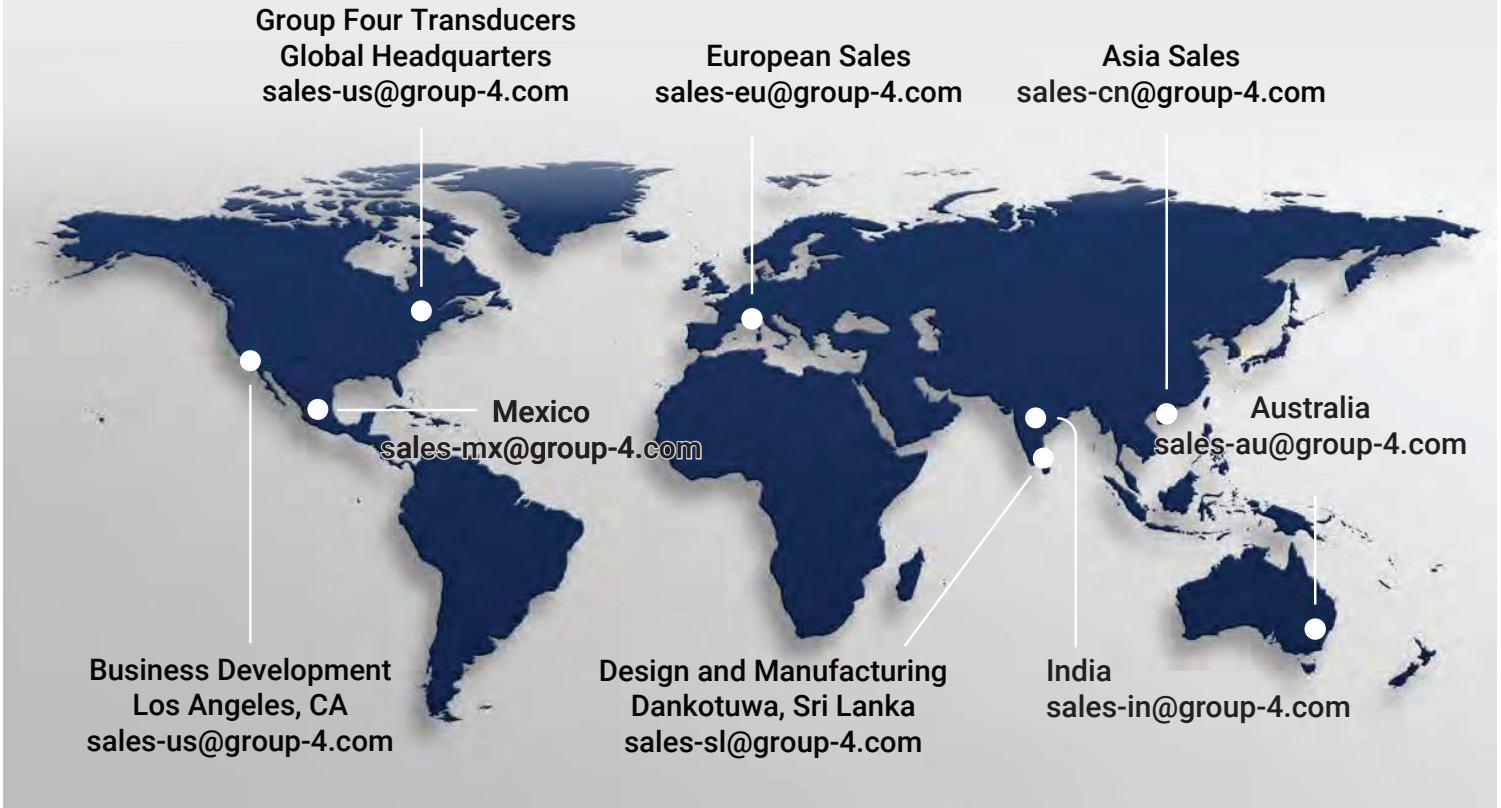
**Interconnect, Conditioning, Accesories**



**Data Monitoring ,Data Logging, Analyzing,Adjustments**



## Locations



**Any sensor design is only as good as the accompanying instrumentation.**

**This is why Group Four has developed a wide range of instrumentation for requirements of displaying, processing and analyzing the load cell signal.**

**Group Four offers instrumentation from a simple panel mount to multi-channel and handheld displays.**

**We recognize many applications require more extensive processing and analyzation so we offer a multitude of analog and digital interfaces to computers and PLC's along with our custom software DOP software for in depth analysis.**

# Contact a Group Four Application Engineer to Discuss Your Measurement System Today!



**Pioneering Measured Solutions**

**Group Four Transducers**  
22 Deer Park Drive,  
E. Longmeadow, MA 01028  
www.groupfourtransducers.com

Phone : **(800) 419 1444**  
Fax : (413) 525 -6182  
sales@group-4.com