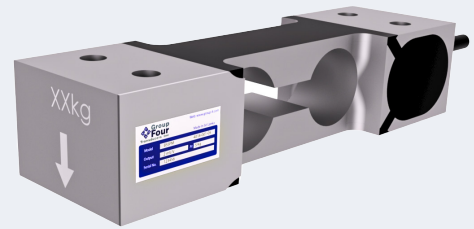


The BSSPM is low capacity aluminum single point load cell. Ideal for use in bench scales, conveyor scales, filling and packaging machines.



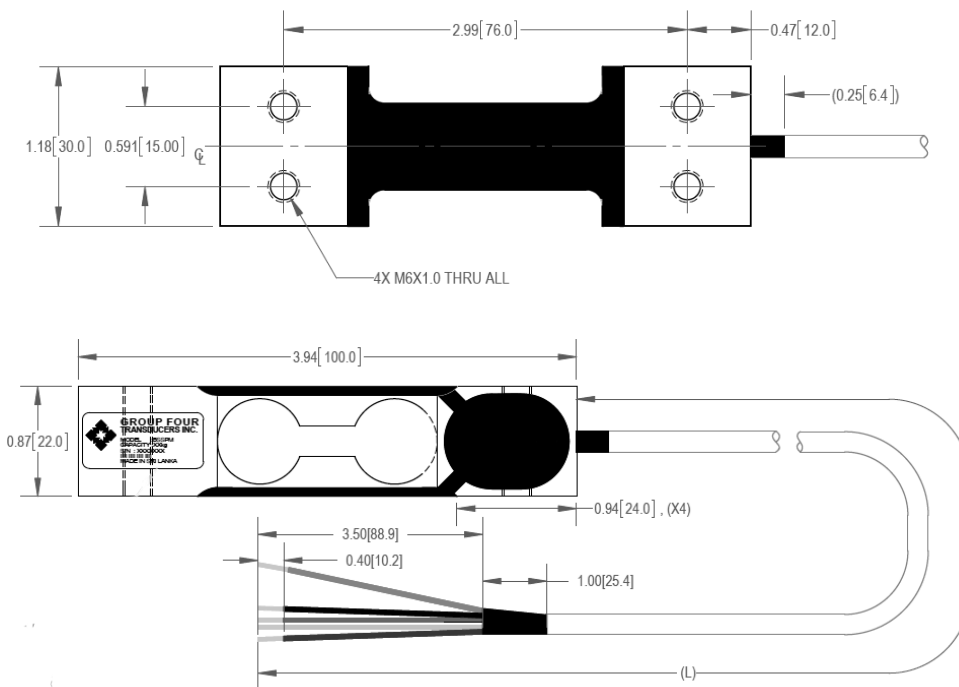
FEATURES

- Capacities 2, 5, 10kgs
- Anodized aluminum construction
- Environmental Protection IP67

APPLICATIONS

- Bench scales
- Retail scales
- Checkweighers
- Filling & packaging machines
- Conveyor scales

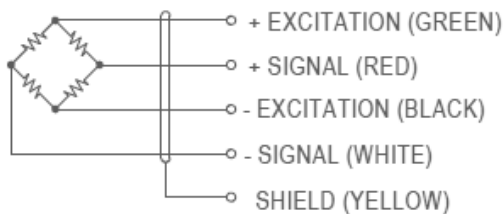
DIMENSIONS



SPECIFICATIONS

Model	BSSPM	
Capacities	kg	See Table 1
Full Scale Output (FS)	mV/V	2.0±10%
Non-Linearity	Hz%FS	≤ ±0.02
Hysteresis	%FS	≤ ±0.02
Creep @ 30 Min	%FS	≤ ±0.017
Zero Balance	%FS	≤ ±5
OCLS		
Max Platform Size	mm	380x380
Max Off Center Distance	mm	134
OCLS Error	%FS	≤ ±0.025
Temperature Effect		
Output	%FS/10°C	≤ ±0.04
Zero	%FS/10°C	≤ ±0.007
Temperature Range		
Compensated	°C	-10 ~ +40
Operating	°C	-20 ~ +65
Terminal Resistance		
Input	Ω	413±30
Output	Ω	350±5
Excitation Voltage	VDC	5~ 15
Insulation Resistance @50 VDC	MΩ	≥5000
Safe Overload Limit	%FS	150
Ultimate Load	%FS	200
Cable Type	28 AWG 4 Core Gray Cable with Shield	
Cable Length (L)	inch	30 ⁺¹ ₋₀
Seal Type	IP67	
Element Material	Anodized Aluminium	

WIRING GRAPHIC



PART NUMBER

Capacity (kg)	Part Number
2	4018-016-03
5	4018-001-05
10	4018-003-05