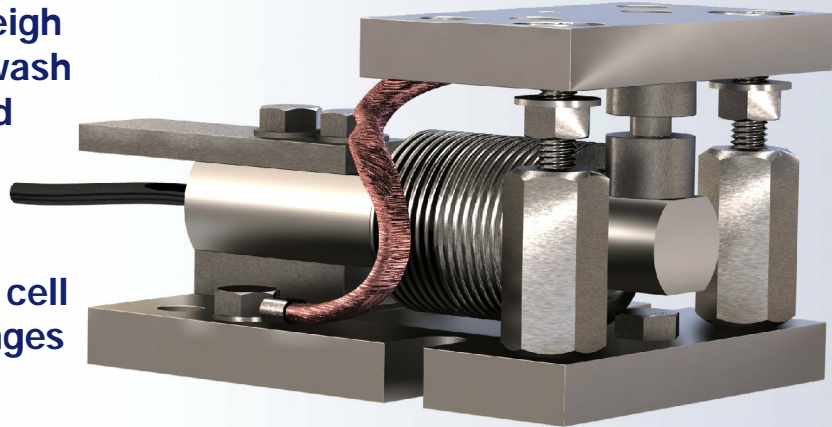


The model 1000WM1 weigh module is designed for wash down environments. food and chemical process applications. This stainless steel, hermetically sealed load cell is offered in capacity ranges from 10kg up to 500 kg.



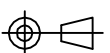
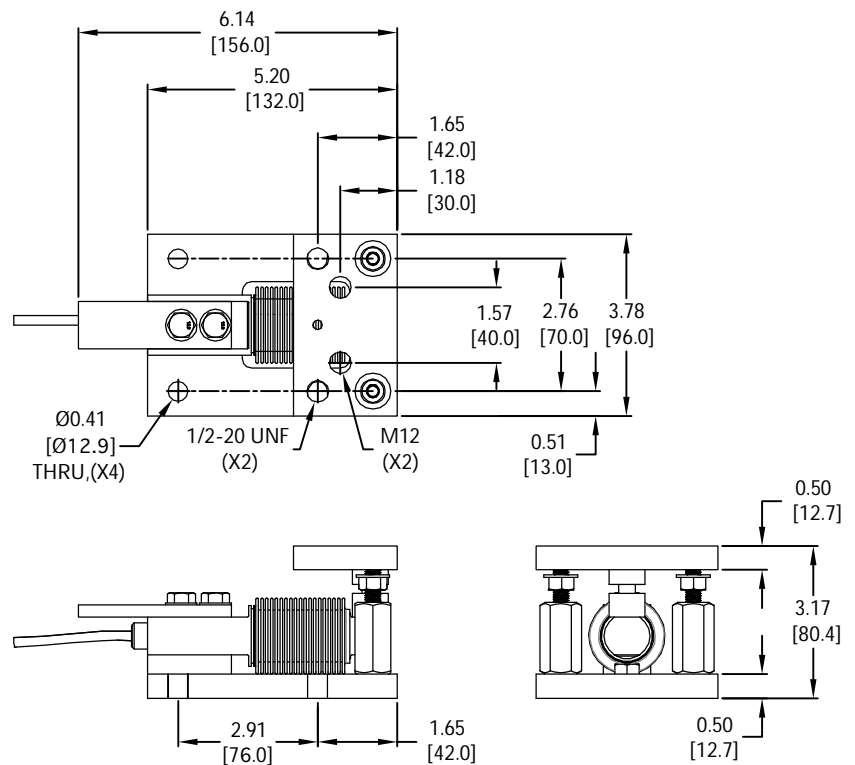
**FEATURES**

- Capacities from 10 kg to 500 kg.
- Stainless steel construction.
- Environmental Protection IP69 with complete hermetic sealing.

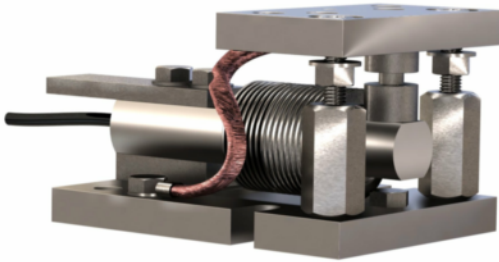
**APPLICATIONS**

- Small hopper, bin and tank weighing systems and other similar systems.

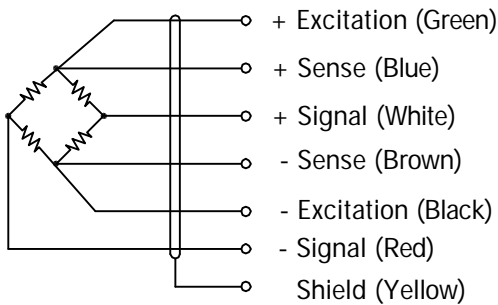
**OUTLINE DIMENSIONS**



# weighing module 1000WM1



## WIRING



Cable : 26 AWG, 6 Conductor with Shield.

## SPECIFICATIONS

Model	1000WM1		
Accuracy class	C3		
Capacities	kg	10/ 20/ 50/ 100/ 200/ 250/ 500	
Full scale output(FS)	mV/V	2.0±0.1%	
Calibration in mV/V/Ω	%	≤±0.005	
Combined error	%FS	≤±0.02	
Non-linearity	%FS	≤±0.0166	
Hysteresis	%FS	≤±0.0166	
Creep@30min	%FS	≤±0.0166	
Zero Balance	%FS	≤±5	
Temperature effect			
	Output	%FS/10°C	≤±0.01
	Zero	%FS/10°C	≤±0.014
Temperature range			
	Compensated	°C	-10... +40
	Operating	°C	-40... +80
Terminal resistance			
	Input resistance	Ω	380±10
	Output resistance	Ω	350±3
Excitation voltage	VDC	5... 15	
Insulation resistance@50VDC	MΩ	≥5000	
Safe overload limit	%FS	200	
Ultimate load	%FS	300	
Safe side load	%FS	100	
Cable length	m	3	
Seal type	IP69		
Element material	Stainless steel		
Bolt torque	Nm	25	

Dimensions and specifications subject to change without notice