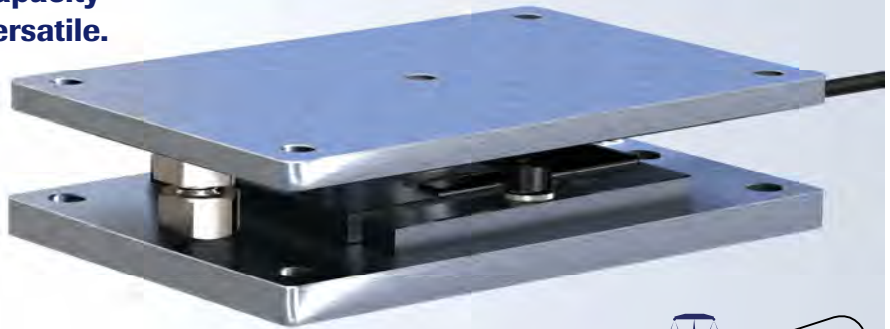


The configurable WMPB is a low capacity weigh modules that is incredibly versatile. User options include total flexibility for specification of scale width, length and height.

Multiple modules can easily be summed with direct connection to your measurement chain network, or simple digital or analog display.



IP67

**FEATURES**

- Capacity range 5kg-10kg, 37.5lb-200lb.
- Environmental protection.
- Integrated overload protection.
- Easy & quick installation , very flexible use.
- Suitable for stationary use.

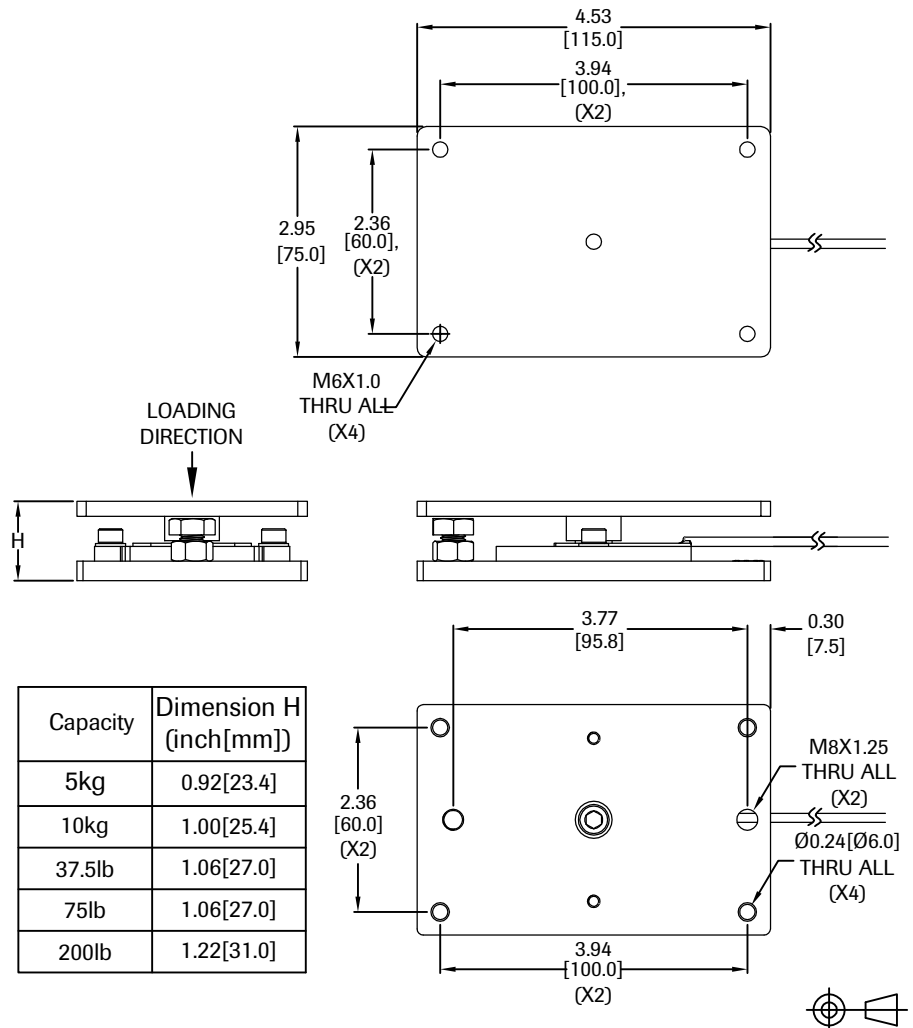
**APPLICATIONS**

- This kit could be used to make tanks, hoppers, vessels, machinery & much more into a scale unit. real-time inventory monitoring.

**OPTIONS**

- Optional load foot

**OUTLINE DIMENSIONS**



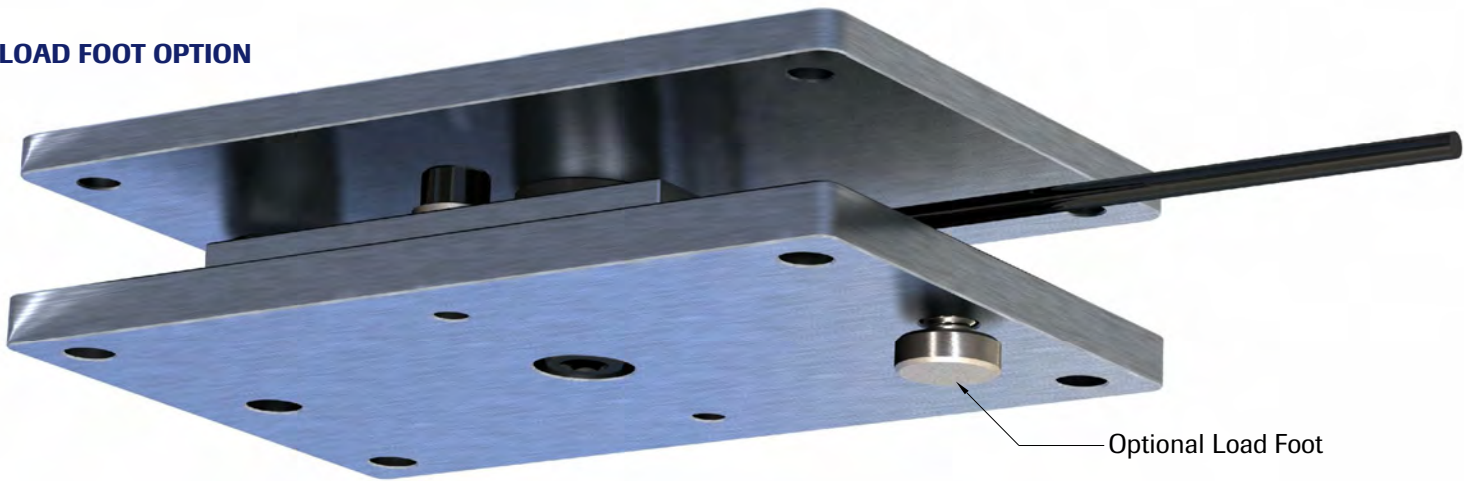
Capacity	Dimension H (inch[mm])
5kg	0.92[23.4]
10kg	1.00[25.4]
37.5lb	1.06[27.0]
75lb	1.06[27.0]
200lb	1.22[31.0]

NOTE: SHOWN LOADING DIRECTION IS FOR POSITIVE OUTPUT.

weighing module

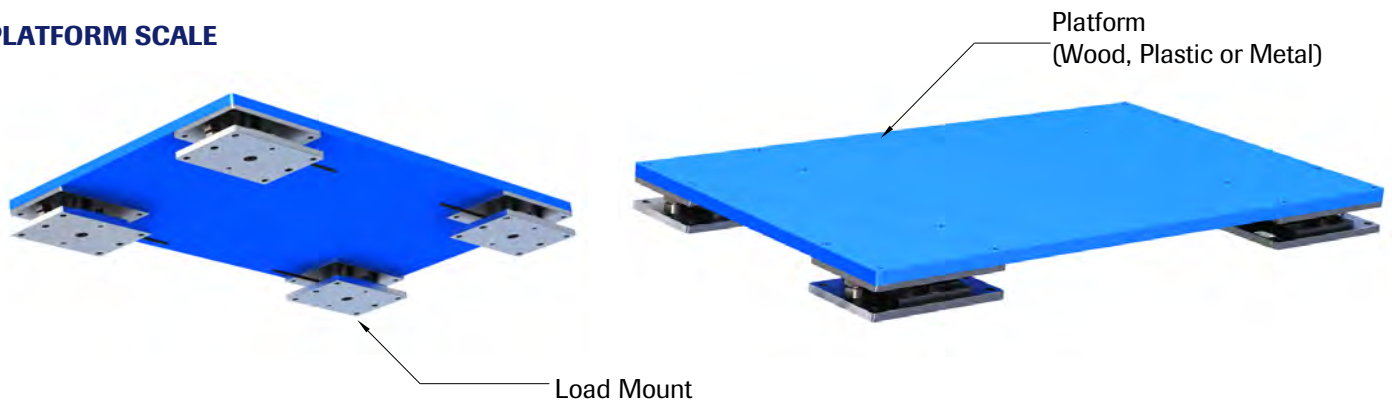
# WMPB 6000WM3

LOAD FOOT OPTION

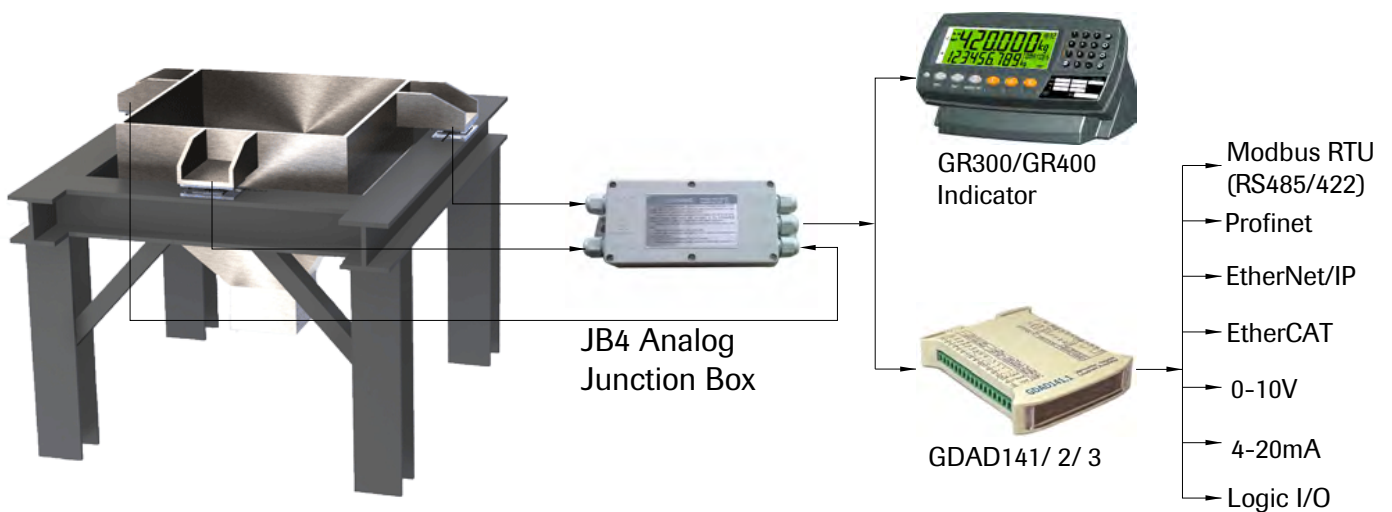


## APPLICATION EXAMPLE

PLATFORM SCALE



HOPPER

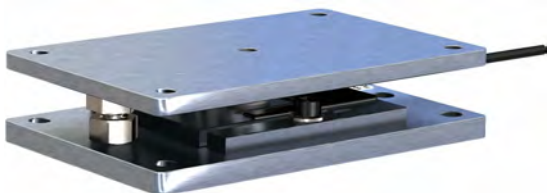


**Group Four Transducers**  
22 Deer Park Drive,  
E. Longmeadow, MA 01028  
www.groupfourtransducers.com

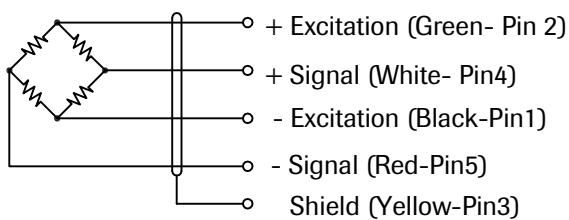
Phone : (800) 419 1444  
Fax : (413) 525 -6182  
sales@group-4.com

weighing module

# WMPB 6000WM3

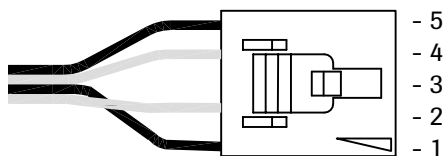


## WIRING



Cable : 28AWG, 4 Conductor Shielded Gray Cable.  
Connector : AMP#5-103961-4.

Pin configuration:



## SPECIFICATIONS

Model	WMPB		
Capacities	See Table		
Full scale output (FS)	mV/V	0.9±0.1	
Calibration in mV/V/Ω	%	≤±0.05	
Combined error	%FS	≤±0.02	
Non-linearity	%FS	≤±0.02	
Hysteresis	%FS	≤±0.02	
Creep @ 20min	%FS	≤±0.03	
Zero balance	%FS	≤±5	
Temperature effect			
	Output	%FS/10°C	≤±0.04
	Zero	%FS/10°C	≤±0.04
Temperature range			
	Compensated	°C	-10...+40
	Operating	°C	-20...+65
Terminal resistance			
	Input resistance	Ω	386±30
	Output resistance	Ω	350±5
Excitation voltage	VDC	5...15	
Insulation resistance @ 50V DC	MΩ	≥5000	
Safe overload limit	%FS	150	
Ultimate load	%FS	200	
Cable length	in	18	
Seal type	IP67		
Element material	Aluminum		

## PART NUMBERS

Capacity	Part No.
5kg	6000WM3-000-00
10kg	6000WM3-001-00
37.5lb	6000WM3-002-00
75lb	6000WM3-003-00
200lb	6000WM3-004-00

Dimensions and specifications subject to change without notice



### Group Four Transducers

22 Deer Park Drive,  
E. Longmeadow, MA 01028  
www.groupfourtransducers.com

Phone : (800) 419 1444  
Fax : (413) 525 -6182  
sales@group-4.com