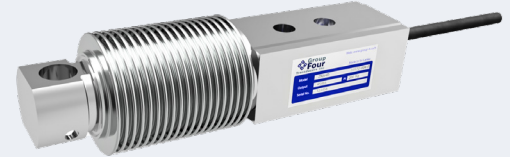


The ZNSHD stainless steel single ended hermetically sealed digital bending beam loadcell is ideal for use in floor scales, bench scales, tank weighing, hopper weighing and conveyor, packaging and filling applications.



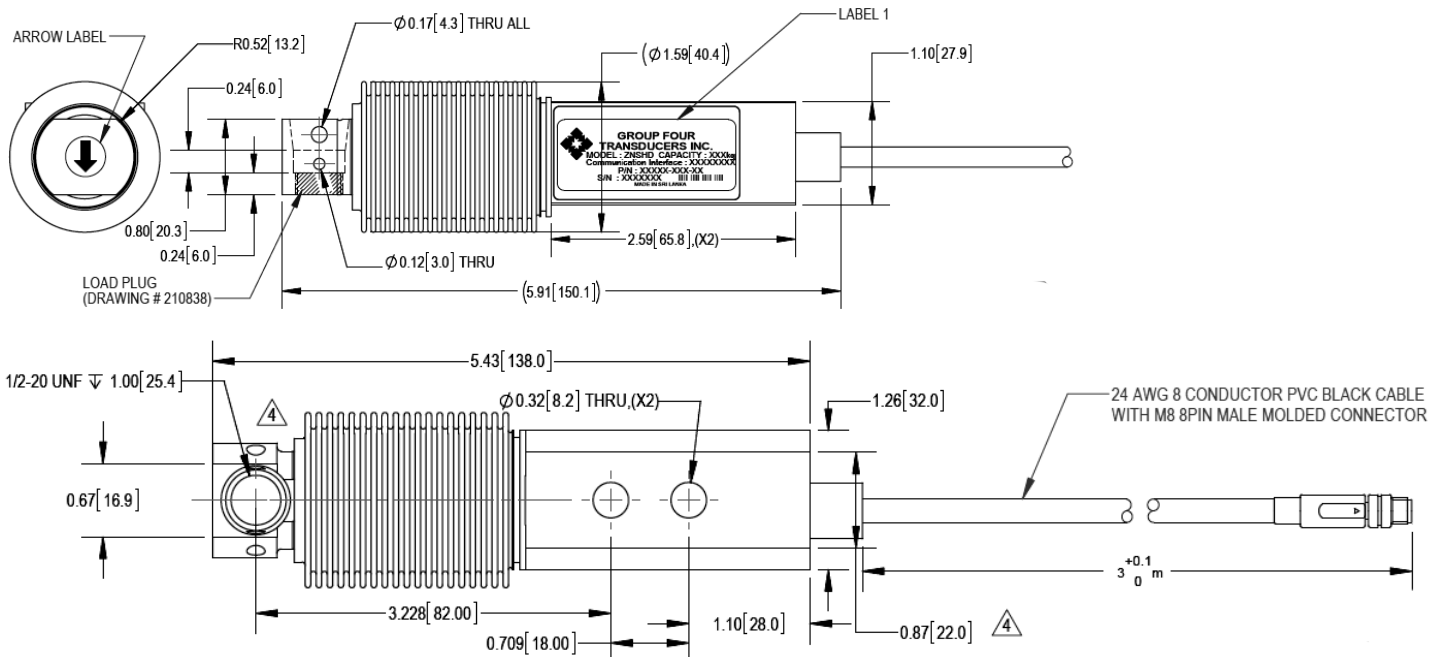
### FEATURES

- Capacities 10kg to 200kg
- Environmental protection IP69
- Stainless steel construction
- Industry standard load plug mounting
- Hermetically sealed
- A to D conversion rate up to 1200upd./sec

### APPLICATIONS

- Floor scales
- Bench scales
- Tank weighing
- Hopper weighing
- Conveyor scales
- Packing & Filling

### OUTLINE DIMENSIONS

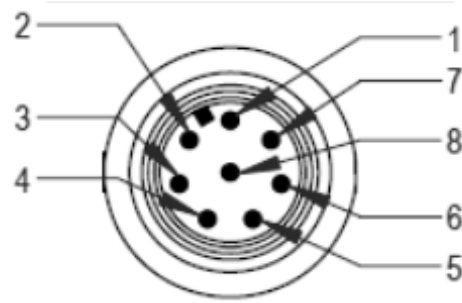


## SPECIFICATIONS

Model	ZNSHD	
Capacity	kg	10, 20, 50, 100, 200
<b>Performances</b>		
Combined Error	%FS	≤0.03
Creep Error (30 min)	%FS	≤0.03
Zero Balance, Raw Counts	Increments	±2000
Output Resolution at Full Load, Raw Counts	Increments	512000
Internal AD Conversion Rate	upd/sec	1200
Fix Digital Low Pass IIR Filter, Default	Hz	18 (supress 50Hz and 60Hz influence)
Adjustable, Digital Low Pass IIR Filter	Hz	18-0.25; selectable in 8 steps
Adjustable, Digital Low Pass FIR Filter	Hz	40-5; selectable in 8 steps
Adjustable, External Output Update Rate	upd/sec	1200-9; selectable in 8 steps
<b>General I/O's</b>		
Hardware Interface, CAN Version		CAN and RS232
Hardware Interface, RS Version		RS485 and RS22 (both 4 wire)
Data Transmission Rate CAN	kb	125; 250; 500; 1000
Data Transmission Rates RS485/RS422/RS232	kb	9.6; 19.2; 38.4; 57.6; 115.2; 230.4; 460.8
Protocol CAN		CANopen
Protocol RS485/RS422/RS232		ASCII or Modbus RTU
Logical Input, Programmable		Trigger Level 2-30VDC, <3mA, Ref to Gnd
Power Supply	VDC	+10±30≤0.4 Watt
<b>Influences</b>		
Safe Load Limit	%*E <sub>max</sub>	150
Ultimate Load	%*E <sub>max</sub>	200
Temperature Effect on Zero	%FS/10°C	0.04
Temperature Effect on Span	%FS/10°C	0.04
Temperature Range	°C	Operating: -10/+40
EMC Performance		MID Class E2 (Industrial Locations)
I/O Protection, all pins		Reversed polarity; Excess voltage and surge
Isolation Body/Electronics at 500VDC	G Ω	≥1
Vibration		2.5G operational; 5G non-operational
Environmental Protection Per IEC 529		IP69
Corrosion Resistance		All Stainless Steel

## WIRING GRAPHIC

Pin No	RS232 + CAN	RS485 + RS422
1	GND1	GND1
2	Program	Program
3	CANH	Rx+
4	Trigger Input	Trigger Input
5	CANL	Rx-
6	RxD	Tx-
7	TxD	Tx+
8	PWR+	PWR+



## PART NUMBER

Capacity (kg)	Capacity (newtons)	Option	Communication Interface	Group Four Part Number
10	100	GEN	RS232 + CAN	1057D-000-00
		A	RS485 + RS422	1057D-000-01
20	200	GEN	RS232 + CAN	1057D-001-00
		A	RS485 + RS422	1057D-001-01
50	500	GEN	RS232 + CAN	1057D-002-00
		A	RS485 + RS422	1057D-002-01
100	1000	GEN	RS232 + CAN	1057D-003-00
		A	RS485 + RS422	1057D-003-01
200	2000	GEN	RS232 + CAN	1057D-004-00
		A	RS485 + RS422	1057D-004-01