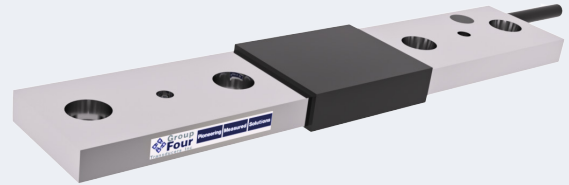


The SNAM is a stainless steel deflection transducer ideal for installing directly on suspension components in trucks and tractors. It measures the deflection and converts it to corresponding weight. It can also be placed on load carrying members to provide solutions for other on board weighing and custom applications.



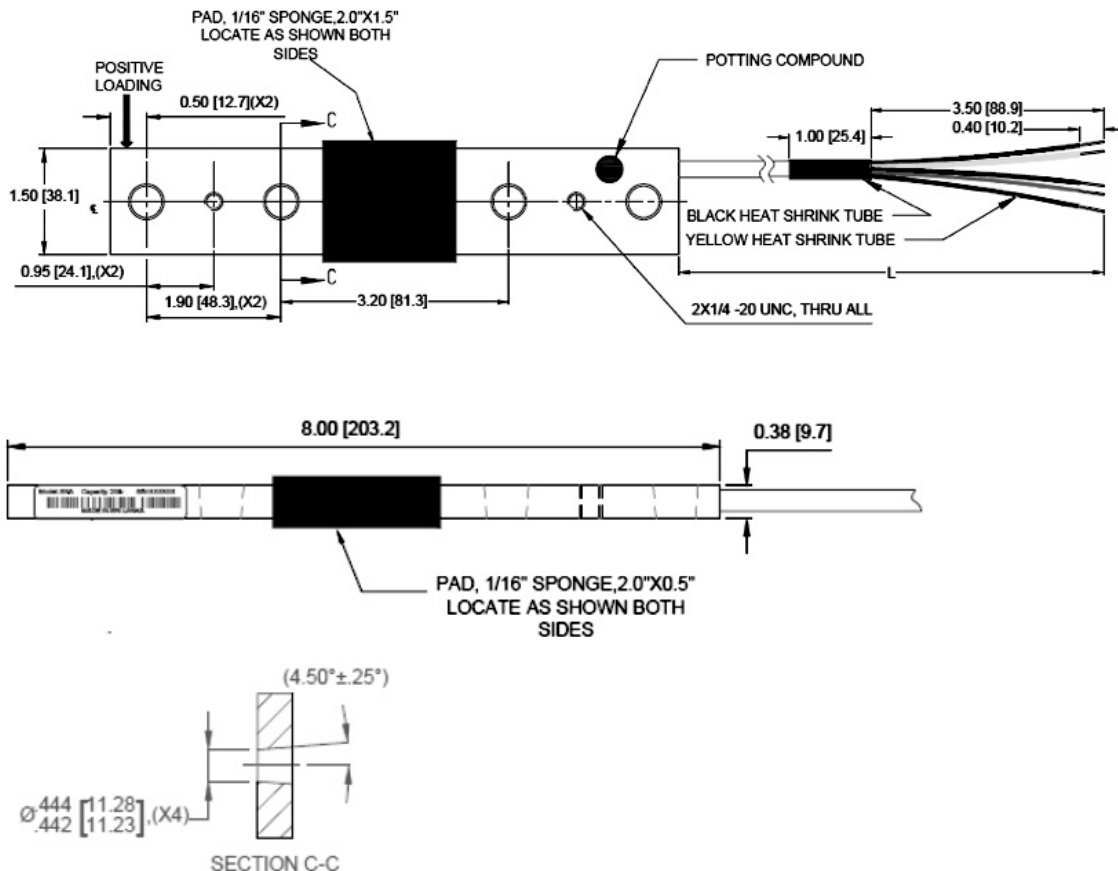
FEATURES

- Stainless steel construction
- Environmental Protection IP67

APPLICATIONS

- On board weighing
- Trucks
- Tractors
- Trailers

OUTLINE DIMENSIONS



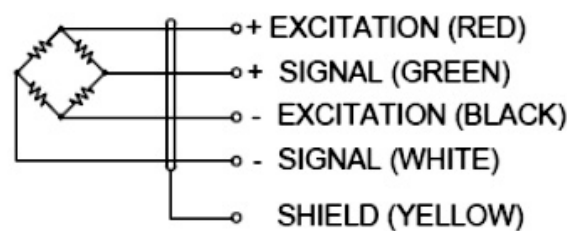
SNAM 8008



SPECIFICATIONS

Model	SNAM	
Capacity	lb	20
Full Scale Output	mV/V	1.07 ±0.1
Creep Error @5min	mV/V	≤±0.003
Zero Balance	mV/V	≤±0.04
Terminal Resistance		
Input		350±50
Output		350±5
Insulation Resistance @50VDC		5000
Excitation Voltage	VDC	5-15
Cable Type	22 AWG 4 Core Black PVC Cable With Shield	
Cable Length (L)	ft	10 ^{+0.1} ₋₀
Seal Type	IP67	
Element Material	Stainless Steel	

WIRING GRAPHIC



PART NUMBER

Capacity (lb)	Group Four Part Number
20	8008-000-01