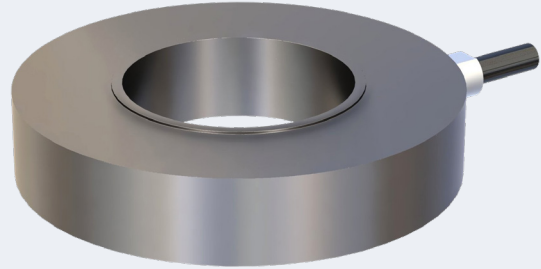


The ENBL is a stainless steel donut load cell for force and weight measurement.



FEATURES

- Capacities 1k, 2k, 5k, 10k, 50k, 75k
- Stainless Steel
- Environmental protection IP67 for 1k-10k, IP68 for 50k&75k

OPTIONS

- Adaptor

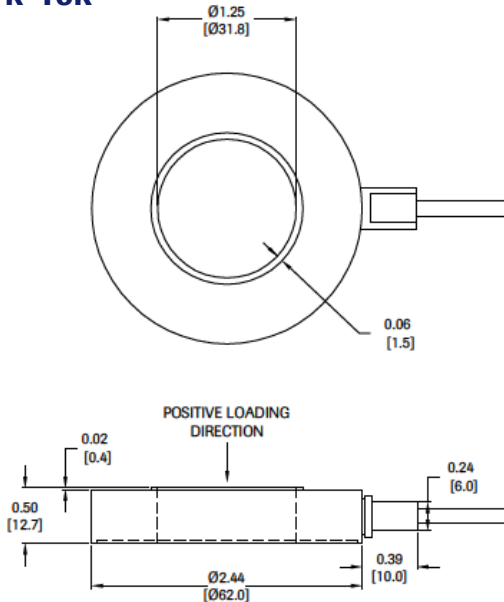


APPLICATIONS

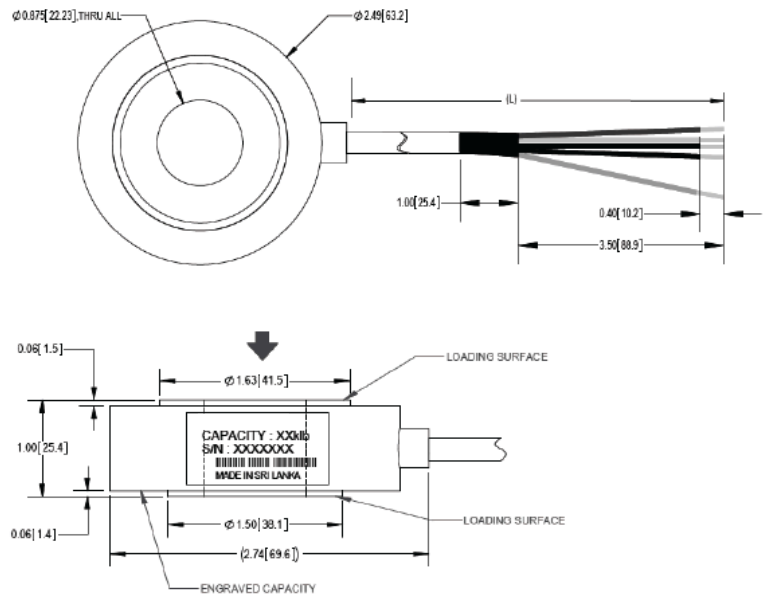
- Force and weight measurement

OUTLINE DIMENSIONS

1k-10k



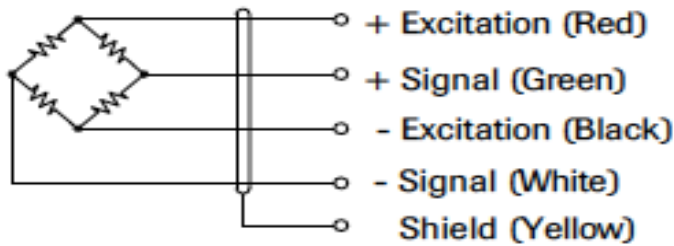
50k & 75k



SPECIFICATIONS

Model	ENBL	
Capacity	klb	1, 2, 5, 10, 50, 75
Full Scale Output (FS)	mV/V	2.0±5%
Combined Error	%	≤±1
Zero Balance	%FS	≤±5
Non-repeatability	%FS	≤±0.1
Creep @ 30min	%FS	≤±0.06
Temperature Effect		
Output	%FS/10°C	≤±0.1
Zero	%FS/ 10°C	≤±0.1
Temperature Range		
Compensated	°C	-10 ~ +40
Operating	°C	-20 ~ +65
Terminal Resistance		
Input	Ω	1k-10k -- 700±30 50k-75k -- 350±30
Output	Ω	1k-10k -- 700±5 50k-75k -- 350±5
Excitation Voltage	VDC	5...15
Insulation Resistance @50VDC	M Ω	≥ 5000
Safe Overload Limit	%FS	150
Ultimate Load	%FS	200
Cable Length (L)	in	3
Seal Type	IP67 for 1k - 10k capacities IP68 for 50k - 75k	
Element Material	Stainless steel	

WIRING GRAPHIC



PART NUMBER

Capacity (klb)	Part Number
1	5045-000-00
2	5045-001-00
5	5045-002-00
10	5045-003-00
50	5045-004-00
75	5045-005-00

ADAPTOR PART NUMBERS

ØB in (mm)	Part Number
0.250 (6.35)	5045-AID-1/4in
0.375 (9.53)	5045-AID-3/8in
0.500 (12.70)	5045-AID-1/2in
0.750 (19.05)	5045-AID-3/4in
1.000 (25.40)	5045-AID-1in