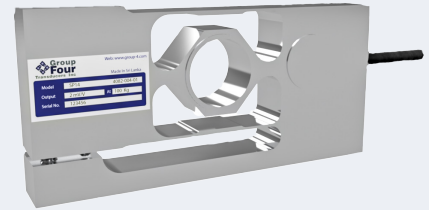


The 4082 series is designed for light and medium applications and is designed specifically to give very fast response time. The high natural frequency makes it perfect for precision filling and check weighing applications. The capacities offered are from 10 kg up to 100 kg. The IP67 moisture rating makes it suitable for a semi-wet environment. The bi-directional, integral overload stop gives this load cell positive overload protection in both tension and compression protecting it from operator abuse.



FEATURES

- Capacities from 10kg to 100kg
- Aluminum construction
- High natural frequency, fast response time
- Integral tension and compression overload stop
- Environmental Protection IP67

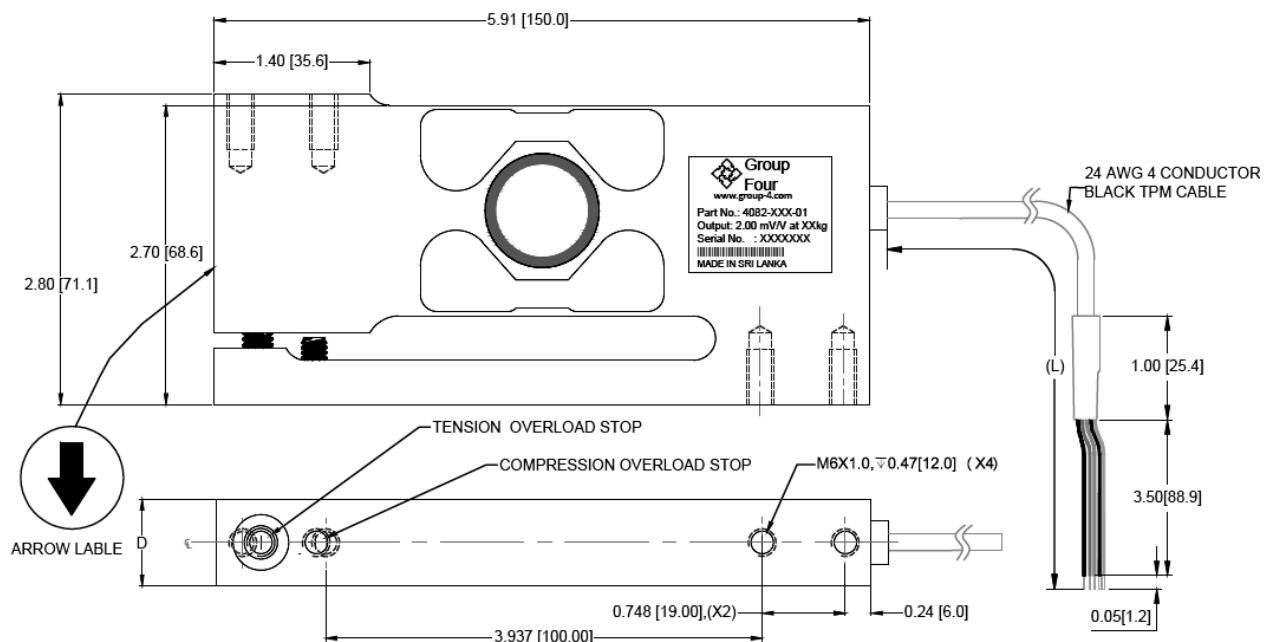
APPLICATIONS

- High precision filling
- Packaging
- Check weighing machines

OPTIONS

- mV/V/Ohm calibration matching
- Voltage output
- Digital serial output

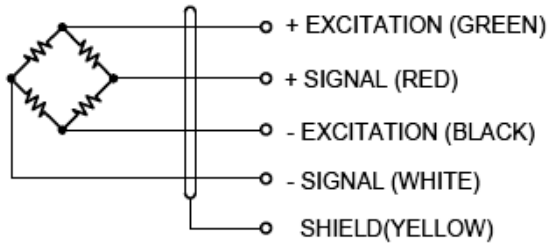
OUTLINE DIMENSIONS



SPECIFICATIONS

Model	SP14	
Accuracy Class	C3	
Capacity	kg	10/20/50/100
Full Scale Output (FS)	mV/V	2.0±0.1%
Combined Error	%FS	≤±0.02
Non-Linearity	%FS	≤±0.017
Hysteresis	%FS	≤±0.017
Creep @ 30min	%FS	≤±0.017
OCLS		
Max. Platform Size	IN	16x16
Max. Offcenter Distance	IN	5.657
OCLS Error @ 1/3 RL	%FS	≤±0.025
Temperature Range		
Compensated	°C	-10~+45
Operating	°C	-20~+65
Temperature Effect		
Output	%FS/°C	≤±0.01
Zero	%FS/°C	≤±0.014
Terminal Resistance		
Input	Ω	1165±5
Output	Ω	1000±3
Excitation Voltage	VDC	5...15
Insulation Resistance @50 VDC	M Ω	≥5000
Ultimate Load	%FS	300
Safe Overload Limit	%FS	150
Seal Type	IP67	
Cable Length (L)	ft	10 ^{+0.2} ₋₀
Element Material	Aluminum	

WIRING GRAPHIC



PART NUMBER

Capacity	Group Four Part Number
10kg	4082-001-01
20kg	4082-002-01
50kg	4082-003-01
100kg	4082-004-01