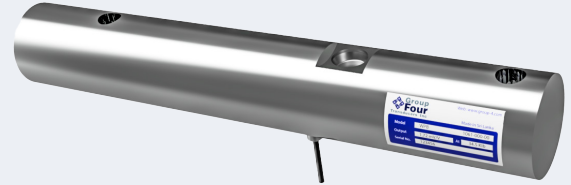


The WPB is a specially designed weigh bar. Ideal for use in floor scales and weighing systems, grain carts, gravity carts, feed mixers, fertilizer and manure spreaders commonly found in the agriculture industry.



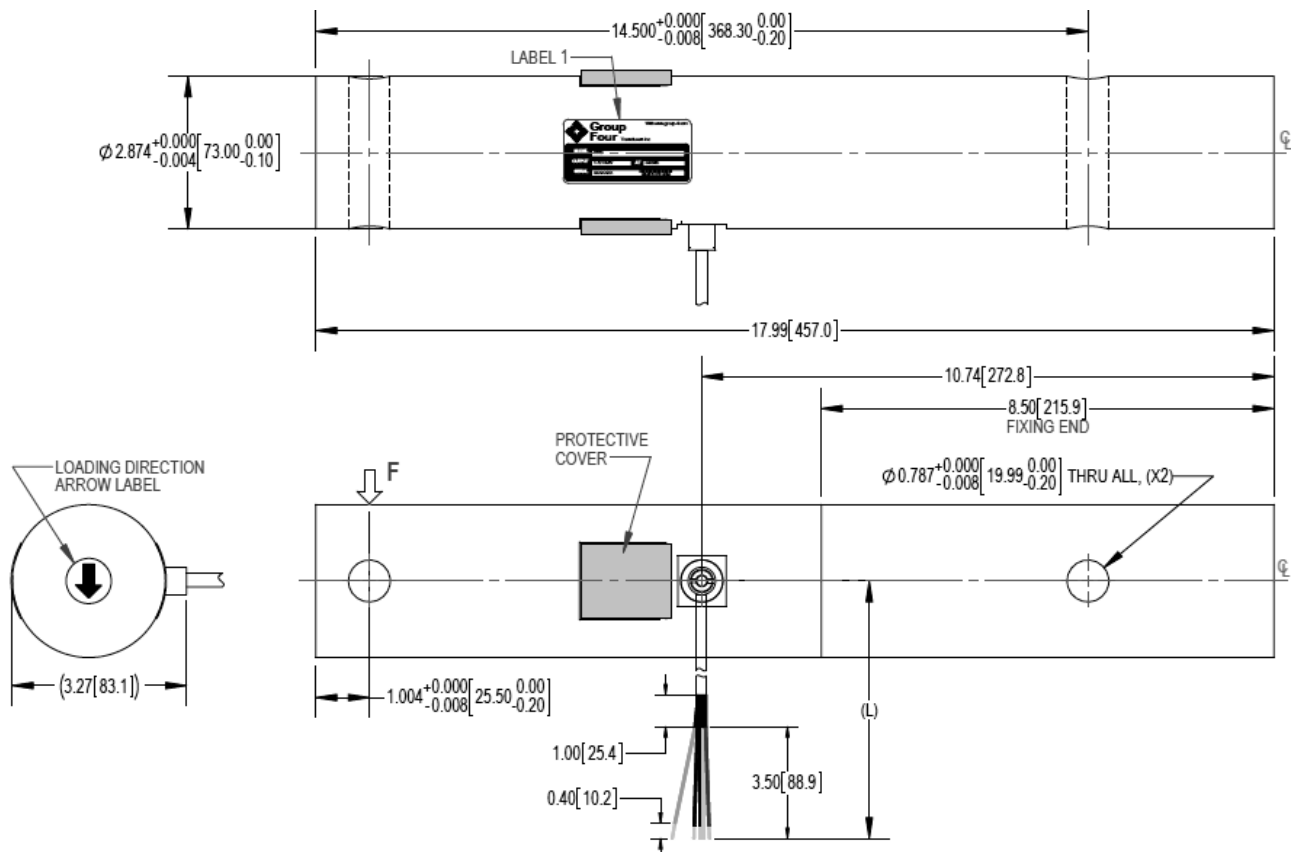
FEATURES

- Capacity 34.5klb
- Stainless steel construction
- Special design for dirt repelling
- Environmental protection IP68

APPLICATIONS

- Agriculture implants
- Grain Carts
- Gravity Carts
- Feed Mixers
- Fertilizer and manure spreaders
- Wash down applications
- Floor scales

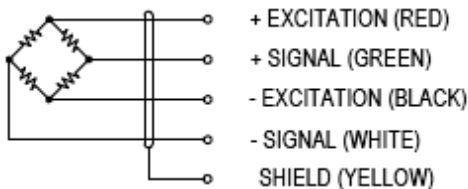
OUTLINE DIMENSIONS



SPECIFICATIONS

| Model | WPB | |
|------------------------------|---|------------------------------------|
| Capacity | klb | 34.5 |
| Full Scale Output | mV/V | 1.72 ±1% |
| Calibration IN mV/V/ Ω | % | ≤±0.05 |
| Non Linearity | %FS | ≤±0.15 |
| Hysteresis | %FS | ≤±0.15 |
| Creep @ 30min | %FS | ≤±0.03 |
| Zero Balance | %FS | ≤±5 |
| Temperature Effect | | |
| Output | %FS/10°C | ≤±0.04 |
| Zero | %FS/ 10°C | ≤±0.04 |
| Temperature Range | | |
| Compensated | °C | -10 ~ +40 |
| Operating | °C | -20 ~ +65 |
| Terminal Resistance | | |
| Input | Ω | 386±30 |
| Output | Ω | 350±5 |
| Excitation Voltage | VDC | 5~ 15 |
| Insulation Resistance @50VDC | M Ω | ≥5000 |
| Safe Overload Limit | %FS | 150 |
| Ultimate Load | %FS | 250 |
| Cable Length (L) | ft | 40.0 ^{+0.17} ₀ |
| Cable Type | 22 AWG 4 Core Black PVC Cable with shield | |
| Seal Type | IP68 | |
| Element Material | Stainless Steel | |

WIRING GRAPHIC



PART NUMBER

| Capacity (klb) | Part Number |
|----------------|-------------|
| 34.5 | 1061-000-00 |