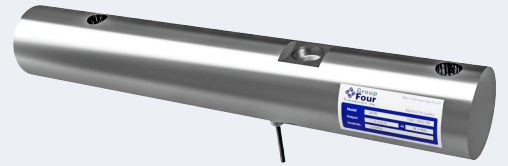


The WPB is a hermetically sealed weigh bar. Ideal for use in floor scales and weighing systems, grain carts, gravity carts, feed mixers, fertilizer and manure spreaders commonly found in the agriculture industry.



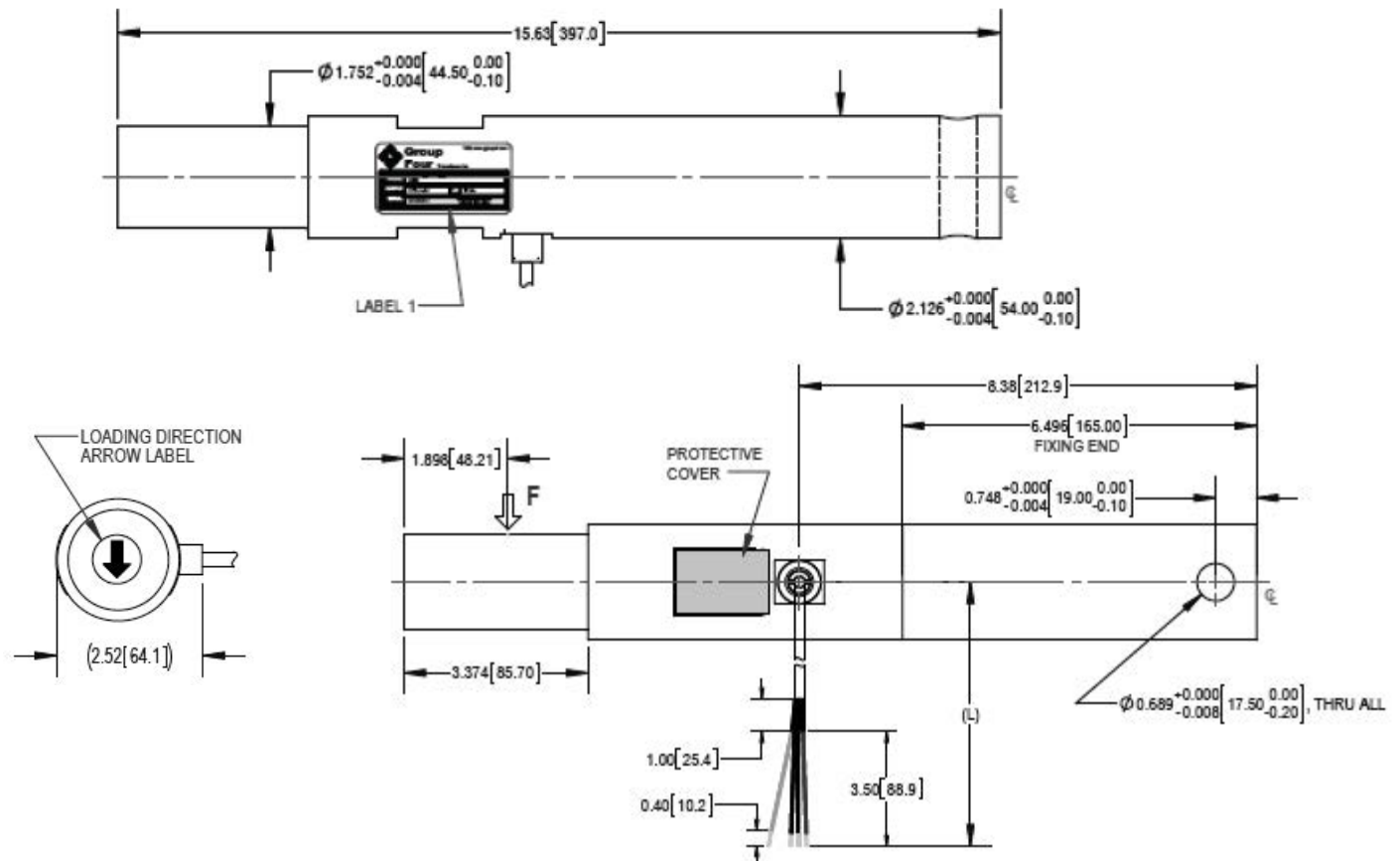
FEATURES

- Capacity 15klb
- Stainless steel construction
- Special design for dirt repelling
- Environmental protection IP68

APPLICATIONS

- Agriculture implants
- Grain carts
- Gravity carts
- Feed mixers
- Fertilizer
- Manure spreaders
- Washdown applications
- Floor scales

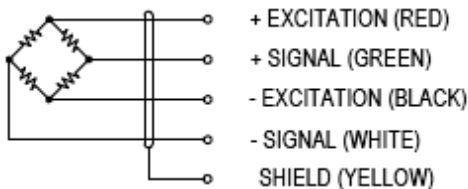
OUTLINE DIMENSIONS



SPECIFICATIONS

Model	WPB	
Capacity	klb	15
Full Scale Output	mV/V	0.75 ±0.1%
Calibration IN mV/V/ Ω	%	≤±0.05
Non Linearity	%FS	≤±0.15
Hysteresis	%FS	≤±0.15
Creep @ 30min	%FS	≤±0.03
Zero Balance	mV/V	≤±5
Temperature Effect		
Output	%FS/10°C	≤±0.04
Zero	%FS/ 10°C	≤±0.04
Temperature Range		
Compensated	°C	-10 ~ +40
Operating	°C	-20 ~ +65
Terminal Resistance		
Input	Ω	386±30
Output	Ω	350±5
Excitation Voltage	VDC	5~ 15
Insulation Resistance @50VDC	M Ω	≥5000
Safe Overload Limit	%FS	150
Ultimate Load	%FS	250
Cable Length (L)	ft	34.4 ^{+0.17} ₀
Cable Type	22 AWG 4 Core Black PVC Cable with shield	
Seal Type	IP68	
Element Material	Stainless Steel	

WIRING GRAPHIC



PART NUMBER

Capacity (klb)	Part Number
15	1060-000-00