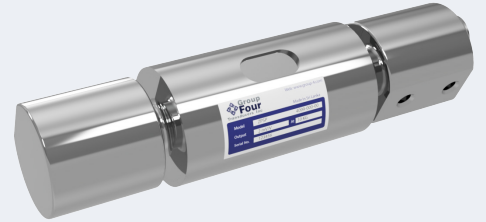


The ZPSP is a low capacity stainless steel single point load cell with IP69 protection. Highly versatile load cell specially designed for hygienic weighing. Hermetically sealed and easy to clean design ideal for use in wash down conditions. Applications include bench scales, conveyor scales, filling and packaging machines in the food industry.



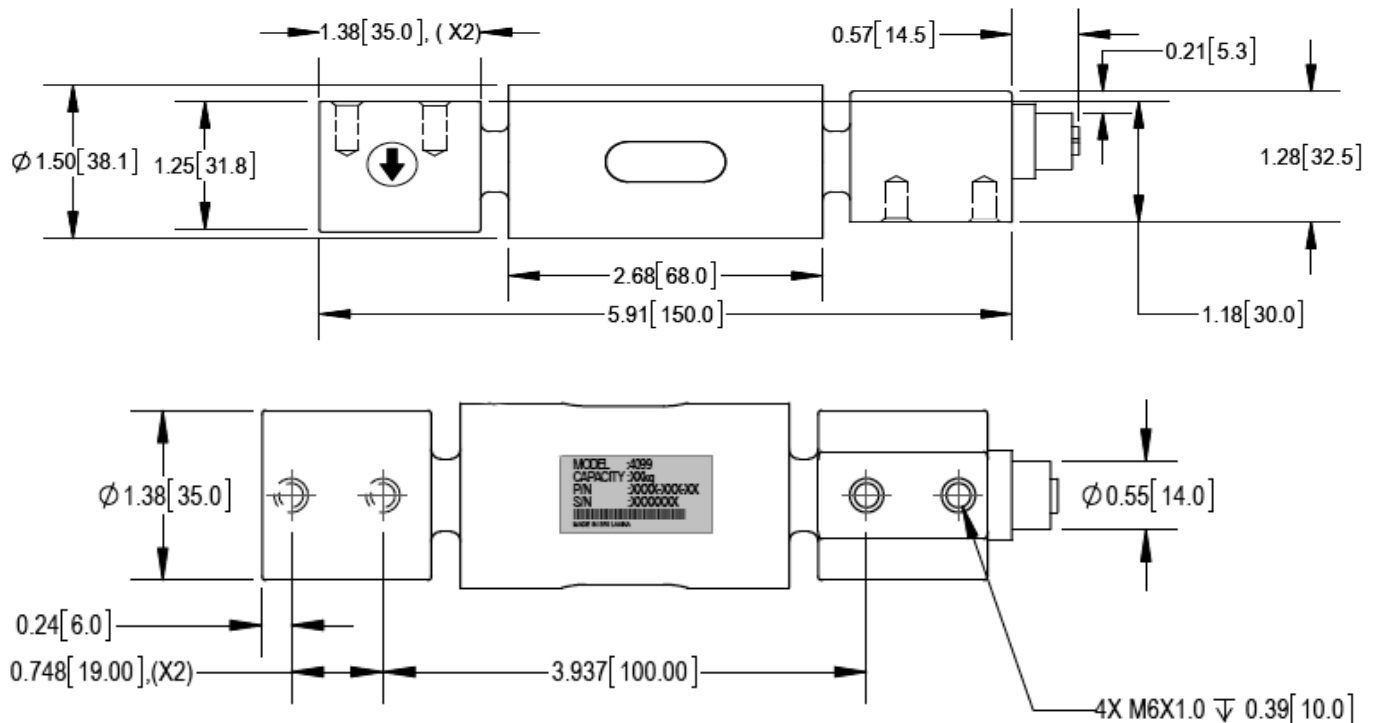
FEATURES

- Capacity 10kg, 20kg
- Stainless steel construction
- Hermetically sealed
- Special design for dirt repelling & hygienic weighing
- Environmental protection IP69

APPLICATIONS

- Bench scale
- Retail scale
- Checkweighers
- Filling & packaging machines
- Food industry
- Conveyor scales

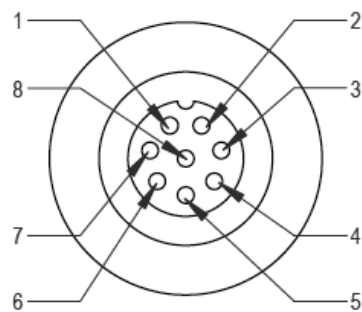
OUTLINE DIMENSIONS



SPECIFICATIONS

Model	ZPSP	
Accuracy Class	C3	
Capacity	kg	10,20
Full Scale Output	mV/V	2.0 \pm 0.2
Non Linearity	%FS	$\leq \pm 0.02$
Hysteresis	%FS	$\leq \pm 0.02$
Creep @ 30min	%FS	$\leq \pm 0.03$
Zero Balance	%FS	$\leq \pm 5$
OCLS		
Max Platform Size	mm	400 X 400
Max Off Center Distance	mm	141
OCLS Error @ 1/3 of RL	%FS	≤ 0.024
Temperature Effect		
Output	%FS/10°C	$\leq \pm 0.01$
Zero	%FS/ 10°C	$\leq \pm 0.01$
Temperature Range		
Compensated	°C	-10 ~ +40
Operating	°C	-20 ~ +65
Terminal Resistance		
Input	Ω	386 \pm 30
Output	Ω	350 \pm 5
Excitation Voltage	VDC	5~ 15
Insulation Resistance @50VDC	M Ω	≥ 5000
Safe Overload Limit	%FS	150
Ultimate Load	%FS	200
Cable Length (L)	see note 02	
Seal Type	IP69	
Element Material	Stainless Steel	

WIRING GRAPHIC



Female Connector Signal Electronics M12AF0008		
Pin No	Connection	Color
1	Signal +	White
2	Sense -	Brown
3	Excitation +	Green
4	N/C	Yellow
5	Excitation -	Gray
6	N/C	Pink
7	Sense +	Blue
8	Signal -	Red

PART NUMBER

Capacity (kg)	Part Number
10	4099-000-00
20	4099-001-00

Notes

- 01. Loading direction is shown for positive output
- 02. Mating cable provided with load cell (CB262. M12 8 pin male to open cable)
- 03. Tightening torque is 10NM