

The digital single ended beam constructed from stainless steel single ended shear beam. Ideal for use in floor scales and tank weighing systems.

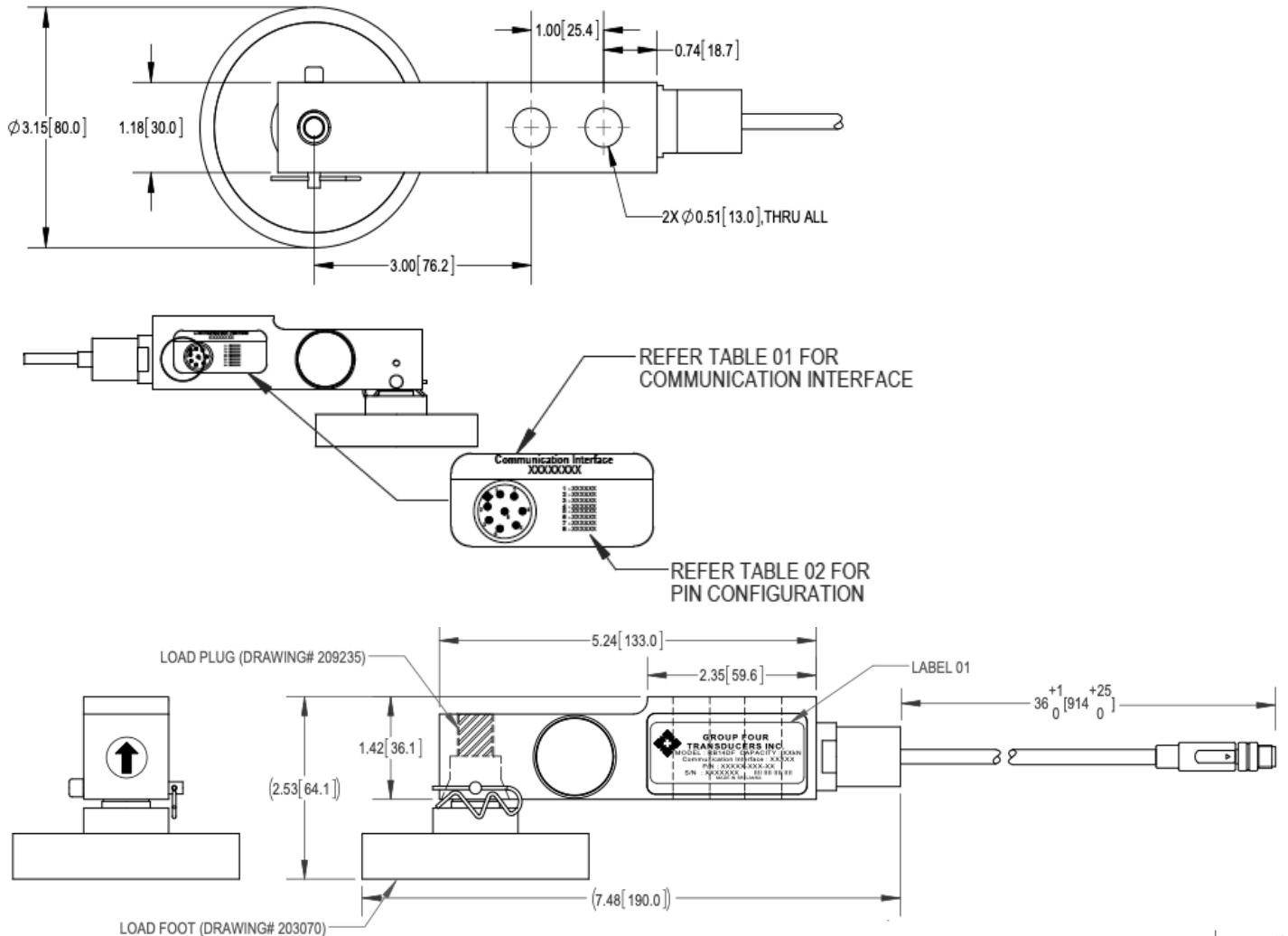
**FEATURES**

- Capacity range: 2, 5, 10, 20KN
- Load plug with low profile load foot introduction
- Environmental protection IP69

**APPLICATIONS**

- Platform scales
- Tank weighing
- Hopper weighing

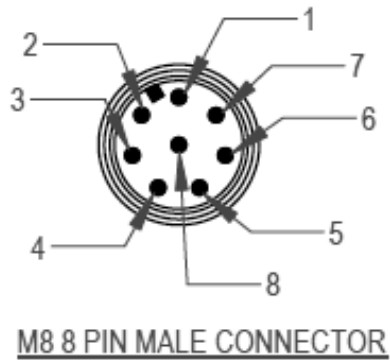
**OUTLINE DIMENSIONS**



## SPECIFICATIONS

Model	RB14DF	
Capacity	kN	2, 5, 10, 20
<b>PERFORMANCES</b>		
Combined error	%FS	$\leq \pm 0.03$
Creep @ 30min	%FS	$\leq \pm 0.02$
Zero Balance, raw counts (for load cell)	increments	$\leq \pm 0.017$
Output resolution at full load, raw counts	increments	512000
Minimum load cell verification interval (Vmin)	N	$\% * E_{max} / 3000$
Internal AD conversion rate	upd./sec	1200
Fix, digital low pass IIR filter, default	Hz	18 (supress 50Hz and 60Hz influence)
Adjustable, digital low pass IIR filter	Hz	18-0.25; Selectable in 8 steps
Adjustable, digital low pass FIR filter		40-5; Selectable in 8 steps
Adjustable, external output update rate	upd./sec	1200-9; selectable in 8 steps
<b>GENERAL I/O's</b>		
Hardware interface, CAN version		CAN and RS232
Hardware interface, RS version		RS485 and RS422 (both four wire)
Data transmission rates CAN	kb	125;250;500;1000
Data transmission rates RS485/RS422/RS232		9,6; 19.2; 38.4; 57.6; 115.2; 230.4; 460.8
Protocol CAN		CANopen
Protocol RS485/RS422/RS232		ASCII or Modbus RTU
Logical input, programmable		Trigger level 2-30Vdc, <3mA, Ref to Gnd
Power supply	VDC	+10-+30 $\leq$ 0.4 Watt
<b>INFLUENCES</b>		
Safe load limit	$\% * E_{max}$	150
Ultimate load	$\% * E_{max}$	200
Temperature effect on zero	%FS/ °C	0.004
Temperature effect on span	%FS/ °C	0.002
Temperature range	°C	Operating: -10/+40
EMC performance		MID Class E2 (Industrial locations)
I/O protection, all pins		Reversed polarity; Excess voltage and surge
Isolation body/Electronics at 500VDC	GΩ	$\geq 1$
Vibration		2.5G operational; 5G non-operational
Environmental protection per IEC 529		IP69k; Connectors IP68
Corrosion resistance		All stainless steel

## WIRING GRAPHIC



PIN NO	RS-232+CAN	RS-485+RS422
1	GND1	GND1
2	Program	Program
3	CANH	Rx +
4	Trigger Input	Trigger Input
5	CANL	Rx-
6	RxD	Tx-
7	TxD	Tx+
8	PWR+	PWR+

## PART NUMBER

Capacity (kg)	Option	Communication Interface	Part Number
2kN (500lb)	GEN	RS-232+CAN	1032D-003-15
	A	RS-485+RS-422	1032D-003-16
5kN (1.25klb)	GEN	RS-232+CAN	1032D-004-15
	A	RS-485+RS-422	1032D-004-16
10kN (2.5klb)	GEN	RS-232+CAN	1032D-005-15
	A	RS-485+RS-422	1032D-005-16
20kN (5klb)	GEN	RS-232+CAN	1032D-006-15
	A	RS-485+RS-422	1032D-006-16