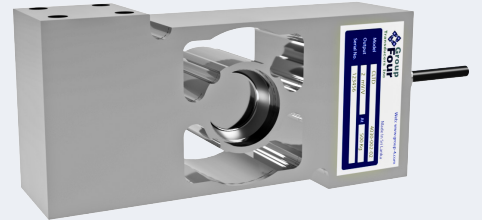


The CLTD is a stainless steel single point load cell. Ideal for use in hazardous environments, gas scales, platform scales and wash down applications.



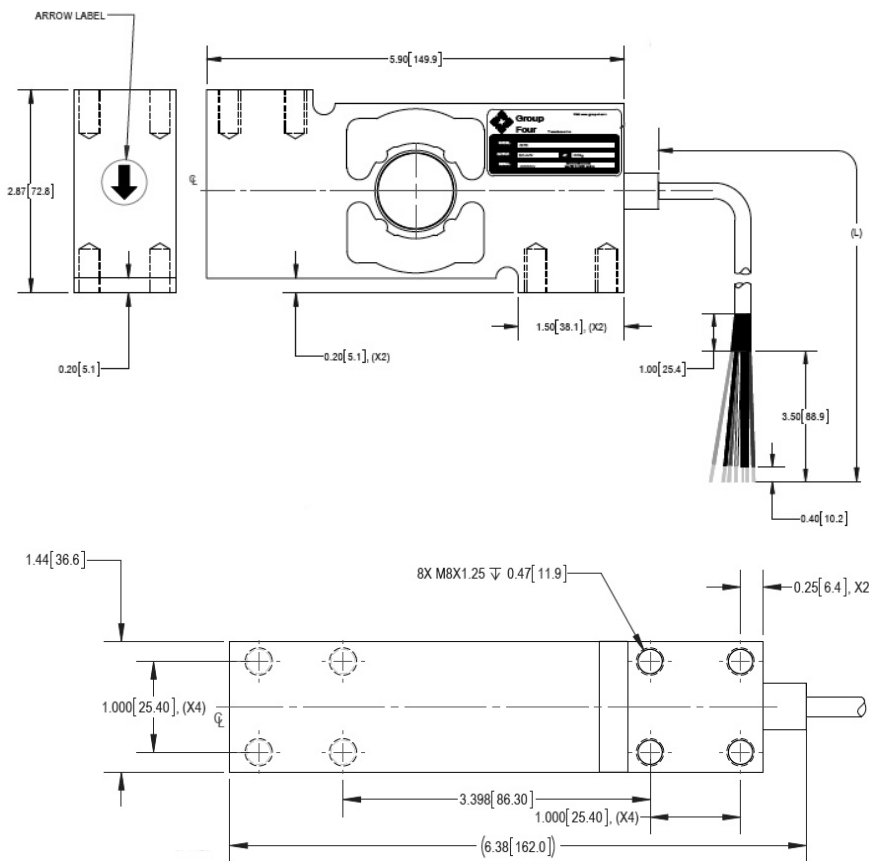
FEATURES

- Capacity 100kg, 250kg, 500kg
- MOC: Stainless steel
- Environmental protection IP69

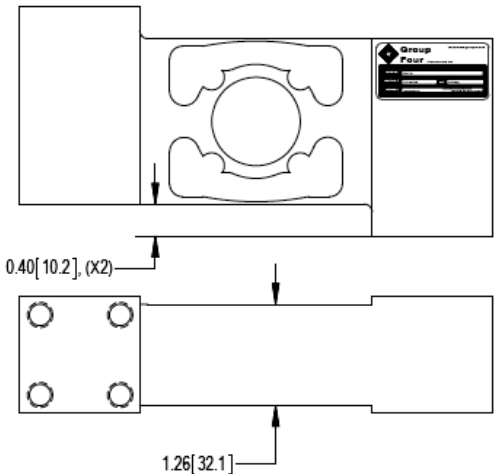
APPLICATIONS

- Platform scales
- LPG filling
- Bench scales
- Food processing
- Harsh environment
- Wash down applications

OUTLINE DIMENSIONS



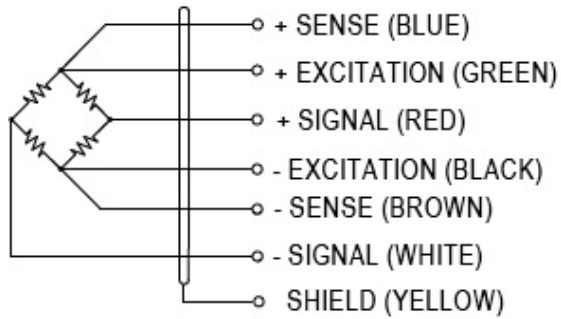
For 100kg & 250kg



SPECIFICATIONS

Model	CLTD	
Capacity	kg	100, 250, 500
Full Scale Output (FS)	mV/V	2.0 ±0.1%
Combined Error	%FS	≤±0.02
Creep @ 30min	%FS	≤±0.02
Zero Balance	%FS	≤±5
OCLS		
Max Platform Size	mm	600 X 600
Max Offcenter Distance	mm	212
OCLS Error @ 1/3 of Emax	%FS	≤±0.05
Temperature Effect		
Output	%FS/10°C	≤±0.04
Zero	%FS/ 10°C	≤±0.04
Temperature Range		
Compensated	°C	-10 to 40
Operating	°C	-20 to 65
Terminal Resistance		
Input	Ω	386±30
Output	Ω	350±5
Excitation Voltage	VDC	5-15
Insulation Resistance @50VDC	M Ω	≥5000
Safe Overload Limit	%FS	150
Ultimate Load	%FS	200
Cable Length	ft	10 ^{+0.2} ₀
Seal Type	IP69	
Cable Type	24 AWG 6 Conductor Foil Shielded Black PVC Cable	
Element Material	Stainless Steel	

WIRING GRAPHIC



PART NUMBER

Capacity (kg)	Part Number
100	4030-000-02
250	4030-001-02
500	4030-002-02