

The LRCN dual bridge load cell is a tension and compression design featuring two, full bridge, 3 mv/v outputs while achieving an accuracy of 0.15% full scale. The stainless steel, compact design allows this load cell to be used in confined spaces where other load cells will not fit. The capacities range from 0-250lbs up to 0-2000lbs. The dual bridge enables the sensor to send a signal to multiple types of input devices such as PLC's digital readouts and data loggers.



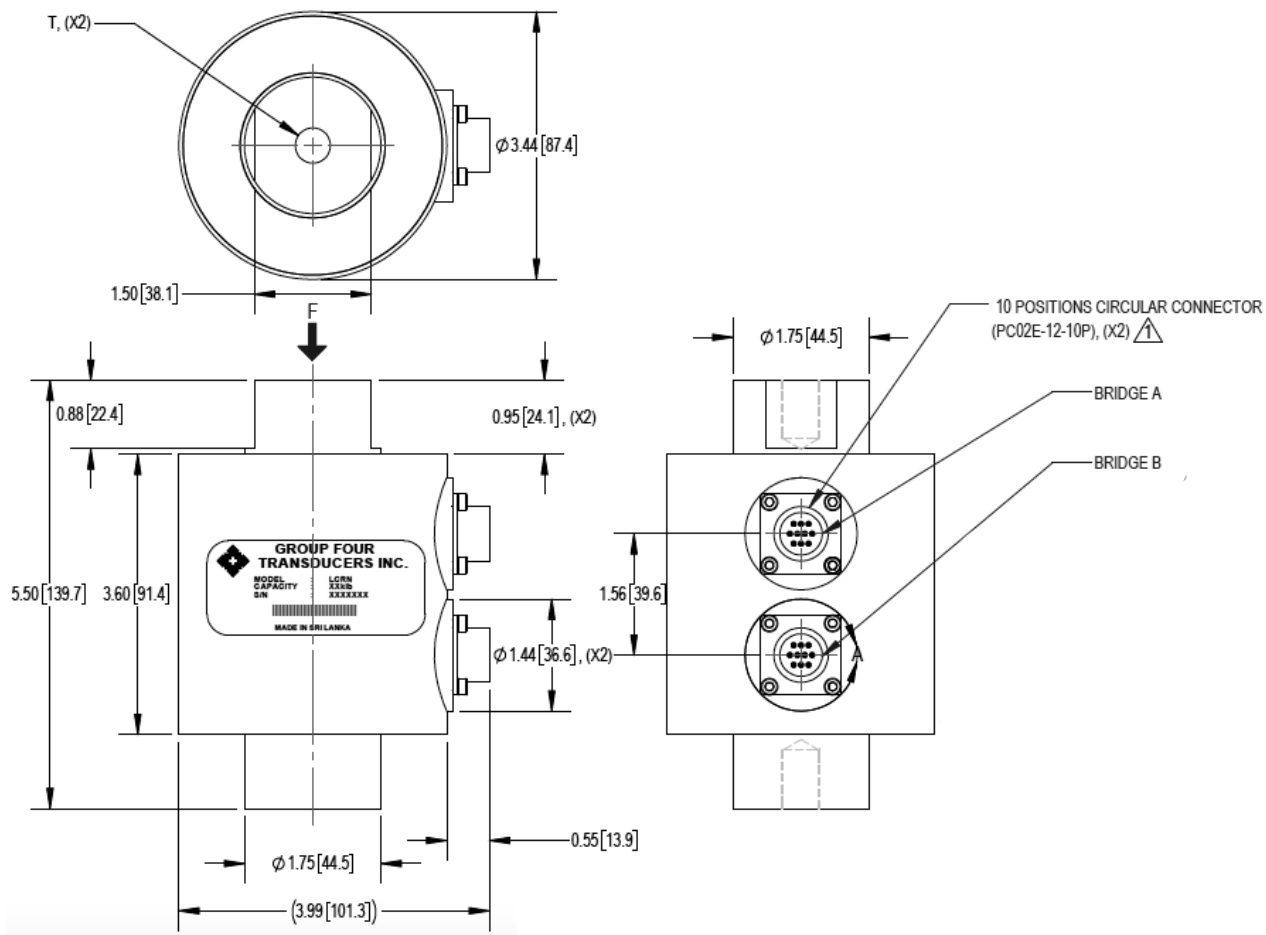
FEATURES

- Dual Bridge
- Stainless Steel Construction
- Safe Overload to 150% F.S
- Compact Design

APPLICATIONS

- Rocket Motor Testing
- Break Strength Testing
- Compression Test Apparatus

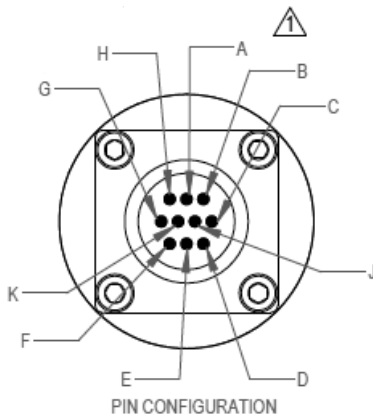
DIMENSIONS



SPECIFICATIONS

Model	LRCN	
Capacities	klb	0.25-2
Full Scale Output	mV/V	$\leq \pm 0.05$
Calibration in mV/V Ω	%	$\leq \pm 0.05$
Non-Linearity	%FS	$\leq \pm 0.05$
Hysteresis	%FS	$\leq \pm 0.05$
Creep Recovery @30 Min	%FS	$\leq \pm 0.02$
Zero Balance	%FS	$\leq \pm 5$
Temperature Effect		
Zero	%FS/10°C	$\leq \pm 0.04$
Span	%FS/10°C	$\leq \pm 0.04$
Temperature Range		
Compensated	°C	-10 ~ +40
Operating	°C	-20 ~ +65
Terminal Resistance		
Input	Ω	386 \pm 30
Output	Ω	350 \pm 5
Excitation Voltage	VDC	5 ~ 15
Insulation Resistance @50VDC	M Ω	≥ 5000
Safe Overload Limit	%FS	150
Ultimate Load	%FS	300
Environmental Protection	IP67	
Element Material	Stainless Steel	

WIRING



Wiring Code		
Function	Bridge A	Bridge B
EXC +	D&H	D&H
EXC -	B&K	B&K
SIG +	E&J	E&J
SIG -	A&F	A&F

PART NUMBER

Capacity (klb)	T	Part Number
0.25	3/8-24	5038-001-03
0.5	3/8-24	5038-002-03
1	1/2-20	5038-003-03
2	1/2-24	5038-004-03

3.20.24